



IMPACT OF SOME AYURVEDIC MEDICINAL PERPRATION ON FRESH WATER FISH, CHANNA PUNCTATUS (BLOCH)

Santosh B. Borkar

Dr. Borkar Biology Classes, Yavatmal(M.S), India

Abstract:

Now days, fish growth and yield depend on the organic and inorganic fertilizers supplementary feed in aqua culture practice. In ponds, the required nutrient for proper growth of fish are limited because of nutrient loss in pond sediment. This loss of nutrients in pond ecosystem can be reduced through the addition of supplementary feed in semi-intensive culture system. In this paper, the herbal preparations are proved to be more adventitious as compare to organic and inorganic fertilizers and supplementary diets. The future of using herbs in animal feeding will me great measure depend on the knowledge chemical structures, their values and characteristics of practical herbs or their extracts need and well –being of animals and all above preferences and expectation. In this work Ashwagandha is considered as a tonic and aphrodisiac by Indian physician who use it in general debility, rheumatism, consumption and loss of appetite. This paper present experimental result and influence of supplementary feeding of AyurvedicRasayanaAshwagandha and Shatavari on Channa Punctatus.

Keywords: Ayurvedic, Ashwandha ,Shatavari, Organic, Feeding, Nutrients;

Introduction

Now a day's India is the threshold of blue revolution and it has made a notable progress and improvement in the field of inland fisheries. Fishes not only play an important role in the demand of food for human but they are widely used for various biological activities. In recent times one of the main challenges faced by fish nutritionals is to spare expensive dietary protein for inexpensive nonprotein in energy sources such as carbohydrates and lipids .These energy source must be incorporated in diets equal to the level of protein, which maximizes the fish growth. Recently only the incorporation of non-protein sources in fish diet has been realized and currently carbohydrate and lipids are being used. The pivotal role of nutrition in aquaculture demonstrated in several studies Falaye,1983,Adiukwu,1999, Fasakin et.al., (2003); Ibiyo and Olowosegun, (2004). Omnivorous and herbivorous fishes have been reported to utilize higher dietary carbohydrate than carnivores Kaushik et.al.,(1989) since they poorly utilize carbohydrate at both digestive and metabolic leaves. Lovell (1989). Increase of lipid levels may reduce fish growth and produce fatty fish. Even non-protein source are used in fish diets. Feeds represents the largest single cost item in carnivore fish production .Fish meal is considered as the major source of dietary protein and lipid supplement in the diets of carnivore fishes. Herbs are more compatible with body because of their normal nature and having medicine homologues components together and lack of unwanted side effects, therefore they are most suitable. Borimnejad, (2008). For this sustainable and successful

freshwater fish culture on scientific basis principally depends upon the use of adequate, economically valuable and environmentally artificial food as well as uses of ayurvedic plants to improve the yield of fish culture. Asparagus racemosus is an herb belonging to the family Asparagaceae commonly called shatavari the roots of these plants finds use in various medicinal preparations .It contains saponins that are present in the root nervine tonic Sharma et. al .,(2000), Jameela et.al.,(2011). The commonly used herbal extracts are from Ocimum sanctum (Tulsi), Withaniasomnifera (Ashwagandha), Tinosporacordifolia (Guduchi) and Emblica officinalis (Amlaki) for the treatment of immunosuppressive conditions for humans and animals Devasagayan (1997), The feeding of ImmuPlus at 1g/kg to Macrobrachiumrosenbergii for three weeks significantly raised the immunity level Kumari Jaya ,(2004). ImmuPlus (AquaImmu), A polyherbal formulation (Indian Herbs) contains the extracts of selected natural Indian medicinal plants A.racemosus, O.sanctum (Tulsi), W.somnifera (Ashwagandha), T.cordifera (Guduchi) and E. officinalis (Amlaki) as major constituents in their optimum concentrations, Jadhav and Bhutani (2006);Jaya Kumari et.al., (2007), Kumari et.al.,(2012). Plant alkaloids are the primary active ingredients of Ayurvedic drugs. Many Ayurvedic medicines are being identified for their usefulness in drugs therapy being determined. Certain percentage of plants is used in traditional medicines and is used for traditional medical treatment. The new drugs from medicinal plants are as valuable medicinal

properties of different plants are due to presence of several constituents that is saponins, tannins, alkaloids, alkanyl phenols, glycols-alkaloids, flavonoids, sesquiterpenes lactones, terpenoids and phorbol esters (Singh et. al., 2003, Tiwari and Singh 2004,).It is estimated that there are 2,50,000 species of higher plants on earth of which more than 80,000 are medicinal plants Kumar and Joshi(1987).The extracts of leaves ,fruits ,roots of various plants are traditionally used as medicine .

Material and Methods

The experimental diet was formulated to contain different levels of Ashwagandha and Shatavari powder (20, 30,40g/kg diet) and (20, 30, 40gm/kg diet) control diet was free from the Ashwagandha and Shatavari. The artificial commercially available food were purchased from local market and dried in freeze and then mixed with Ashwagandha&Shatavari separately. These powder form transformed into pellet form dried in oven and then transferred to plastic bags and stored in freeze until immediately prior to feeding. The diet was fed to fishes for 1 to 49 days. At the start of the experiment, fish weighed in gram and measured length in centimeter was recorded. Fish were fed on the same diet once a day in the 10 o'clock. After six hours of feeding, fish fecal matter were collected by net and filtered on Whattmann paper in 1 for ½ hours to removal of water after drying stored in a freezer for analysis.

Observation and Results

Average Body Weight: In the present study (Table1&Fig.1.1) showed that the average body weight at the start of the experiment food + Ashwagandha were found to be 22.54±0.154; 39.75±0.378; 48.75±0.54; 64.43±0.605; 73.44 ±0.27; 87.38 ±0.293; 126.27 ±0.591, from 7th days to 42nd days It showed increased body weight trend .The diet mixed with medicinal plant Shatavari were found to be 25.83 ±0.44; 39.88 ±0.387; 55.72 ±0.584; 69.76 ±1.707; 79.15 ±0.533; 88.89 ±0.171; and 121.54 ±0.973 were found to be increased trend days wise as compared to control values .The result showed that the medicinal plants Ashwagandha and Shatavari showed increase trend of the body weight of the freshwater fish Channa punctatus.

This is additive medicinal preparation effective for improving the body weight. Ashwagandha is a general body tonic to increase energy, health and longevity because of presence of adaptogens. While Shatavari contain steroidal saponins it showed adaptogenic properties used as growth promoter herbal.

Days	Control(Average weight28-48mg) SE=0.138	Ashwagandha (weight-mg) SE=0.069	Shatavari (Weight-mg) SE=0.19
0	19.55 ±0.312	22.54 ±0.156	25.83 ±0.44
7	28.95 ±0.01 SE=0.21	38.89 ±0.406 SE=0.181	39.89 ±0.38 SE=0.158
14	39.76 ±0.40 SE=0.182	46.24 ±0.4 SE=0.178	55.72 ±0.58 SE=0.261
21	32.28 ±0.58 SE=0.259	63.36 ±0.371 SE=0.164	69.76 ±1.70 SE=0.763
28	47.05 ±0.4 SE=0.178	72.21 ±0.68 SE=0.307	79.15 ±0.53 SE=0.238
35	48.34 ±5.36 SE=0.239	86.25 ±0.724 SE=0.324	88.89 ±0.17 SE=0.076
42	48.31 ±5.26 SE=0.231	121.87 ±0.98 SE=0.44	124.54 ±0.973 SE=0.44

Table 1 :Average body weight (g) ±SE of Channa punctatus fed Ashwagandha and Shatavari during the experimental period.

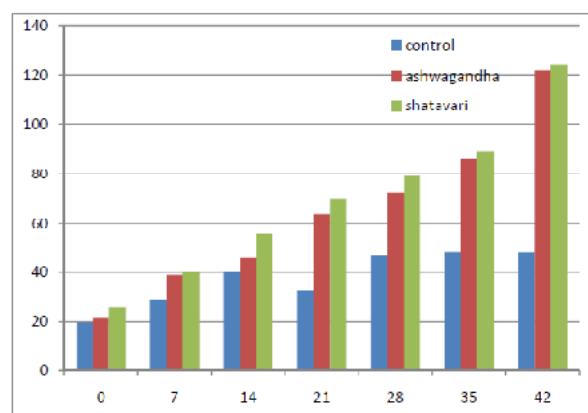


Figure 1.1: Average body weight (g) ±SE of Channa punctatus fed on Ashwagandha and Shatavari during the experimental period

Discussion

The achieved results fed with Ashwagandha and Shatavari to freshwater fish Channa punctatus showed major improvement in body weight significantly as compared to control groups. The increase weight showed more increase in Shatavari than Ashwagandha fed during 7th to 42nd Days. Similar findings Kobeisy and Hussain (1995), studied Oreochromis niloticus found that dietary food gave to the fishes and showed significantly increase in body weight of fish. Among three carps Catlacatla ,Showed maximum average body weight (1256 g), followed by Labeorohita (1215.0 g) and Cyprinus carpio (1119.01 g) in supplemented diet. Highest growth performance of Catlacatla was due to the higher growth potential. Hasan and Macintosh (1991), Vijaykumar and Devraj (1994) and Omer (1986), who observed the increase in body weight with the increase in feeding level. Ghosh (1984), Akram et.al.,(1994), and Janjua (1996) ,they reported that increase in feeding rates body weight increase the growth of the fish

.Maximum growth rate was obtained in *Cirrhinus mrigala* Javed et.al., (1993). Also by Singh and Gaur (2005), stated that weight gain maximum when various dietary protein levels and carcass composition given to rohu, *Labeorohita* fingerlings. In the present investigation concluded that the average body weight Fresh water Fish *Channa punctatus* showed day's wise increased trend as compared to control values.

References

1. Akram, M., I. Ahmad and I. M. Janjua (1994): Performance of *Catla catla* under different levels of supplementary feeding in fertilized ponds Pak. J. Sci. 32:355-357
2. Borimnejad, V. (2008): Niche Markets in the Agricultural Sector, case study: Iran, American – Eurasian J. Agric. J. Environ. Sci. 3, pp 893-899.
3. Falaye, A. C. (1983): The use of hydrolyzed feather meal alone or in combination with supplemental amino acid as a dietary source of tilapia (*Oreochromis niloticus*) M. Sc. Thesis U.K.
4. Fasakin EA, Balogun AM, Ajayi OO (2003): Evaluation of full-fat and defatted maggot meals in the feeding of clariid catfish, *Clarias gariepinus* Aquac. Res. 34 (9):733-738
5. Ghosh S. K., B. K. Mandal and D. N. Barthapur (1984): Effect of feeding rate on production of common carp and water quality in paddy cum fish culture. Aquaculture. 40:97-101.
6. Hasan M. R. and D. J. Macintosh (1991): Effect of environmental temperature and feeding rate on the growth, food utilization and body composition of common carp (*Cyprinus carpio*) fry, Fish Nutrition in Practice. Int. Symp. Fish Nut & Fed. France.
7. Ibio, L. M. O. and T. Olowosegun (2004): On farm feed: The potential for improving profitability in aquaculture In P. A. Araoye (ed) conf. Proceeding of fisheries, Soci. Nig. PP 80-90.
8. Jadhav, A. N. and K. K. Bhutani (2006): Steroidal saponins from the roots of *Asparagus adscendens* Roxb and *Asparagus racemosus* Willd. Indian J. Chem. Section B organic and Medicinal Chemistry 45 pp 1515-1524.
9. Janujua I. M. (1996): Effect of supplementary feed, fertilizer on survival and growth rate of fingerlings of *Labeorohita* M. Phil Thesis Dept. Zool. And Fish Univ. Agri. Pak. pp 120.
10. Jayakumari, P. K. Sahoo and S. S. Giri (2007): Effects of polyherbal formulation 'ImmuPlus' on immunity and disease resistance of Indian major carp, *Labeorohita* at different stages of growth. Ind. J. Exp. Biol. Vol. 45, PP 291-298
11. Jameela M. S., Ajaz H. Mohideen., K. S. Sunitha and M. Narayanan (2011): Antimicrobial activities of three medicinal plants against fish pathogens Inter Nat. J. Biol. Tech. 2(2) pp-57-60
12. Kaushik S. J., Medale F., Fauconneau B. and Blank D. (1989): Effect of digestible carbohydrate on protein/energy utilization and on glucose metabolism in rainbow trout (*Salmo gairdneri* R.) Aquaculture 79:63-74.
13. Kumari R., Tiwary, B. K., Prasad, A. and S. Ganguly (2012): *Asparagus racemosus* wild root extract as herbal nutritional supplement for global J. Res. Med. Plants and Indigen. Med. 1(5) pp 160-163.
14. Kobaeisy, M. A. and S. Y. Hussein (1995): Influence of dietary live yeast on growth performance and some blood constituents in *Oreochromis niloticus* Proceedings of 5th Science conference Animal Nutrition Dec. 12-13 Ismailia Egypt pp 417-425.
15. Lovell, T. (1989): Nutrition and Feeding of fish. An Avl Book. Van Nostrand Reinhold, New York, USA.
16. Omar, E. (1986): Studies on Tilapia feeding: Effect of different levels of feeding on growth performance and feed utilization. Egpt. J. Anim. Pro. 26:161-169.
17. Sharma, P. C., Yelne, M. B. and T. J. Dennis (2000): Database on medicinal plants used in Ayurveda Vol I Central Coun. Research in Ayurveda and Siddha Yugantar Pra. Ltd. 518-430.
18. Singh P. K. and S. R. Gaur (2005): Effect of various Dietary Protein levels on growth, Food utilization and carcass composition of Rohu, *Labeorohita* fingerlings Environ. & Ecol. 23 5(3):492-496.
19. Tiwari, S. and A. Singh (2004): Toxic and sub lethal effects of Oleadrin on biochemical parameters of freshwater air breathing murrel, *Channa punctatus* (Bloch). Indian J. Exp. Biol. 42. pp 413-418
20. Vijaykumar, H. V. and K. V. Devraj (1994): Growth response of fry of the fish *Catla catla* fed on three formulated feeds. Environ. & Ecol. 12(3) pp 519-523.